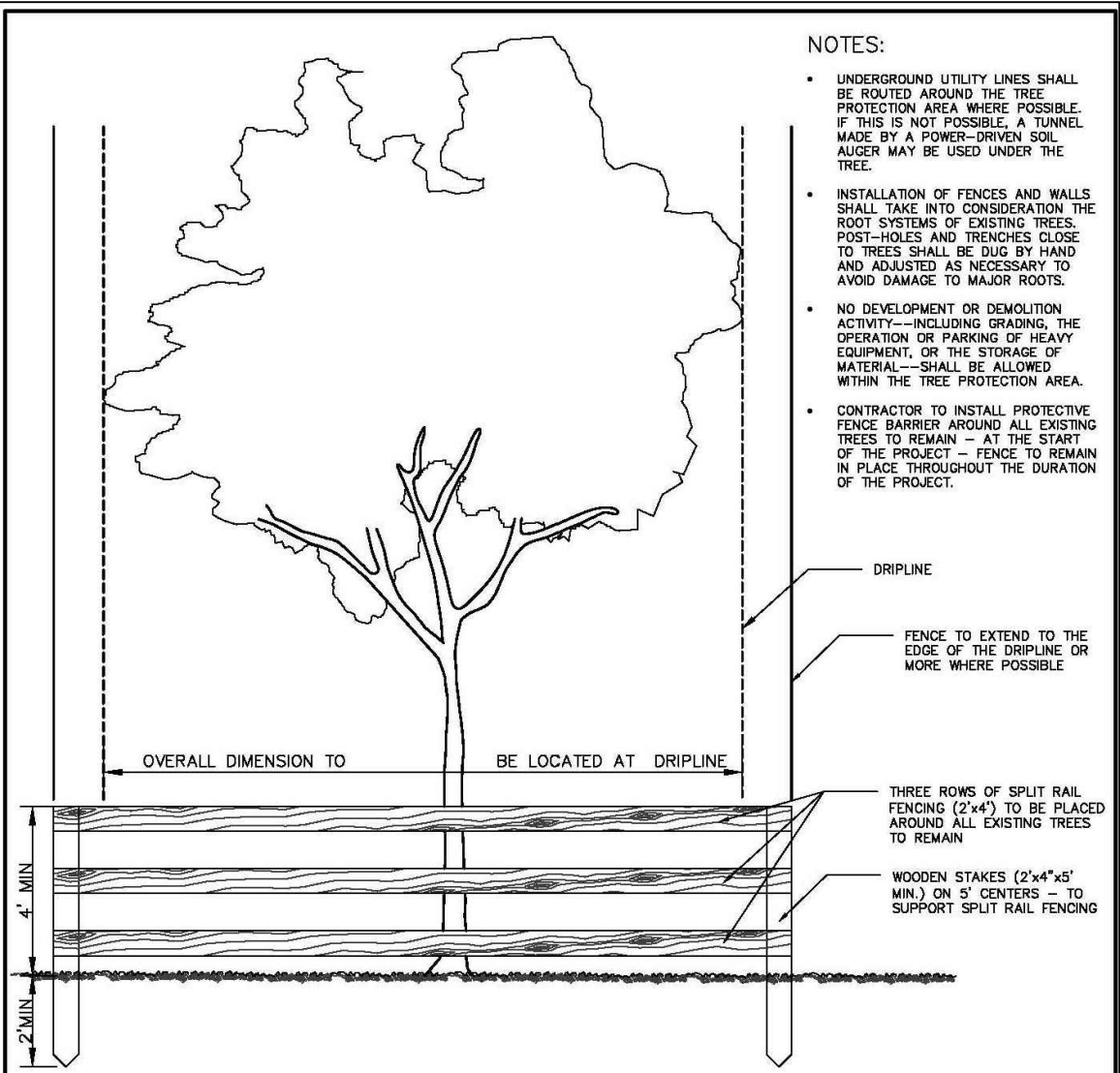
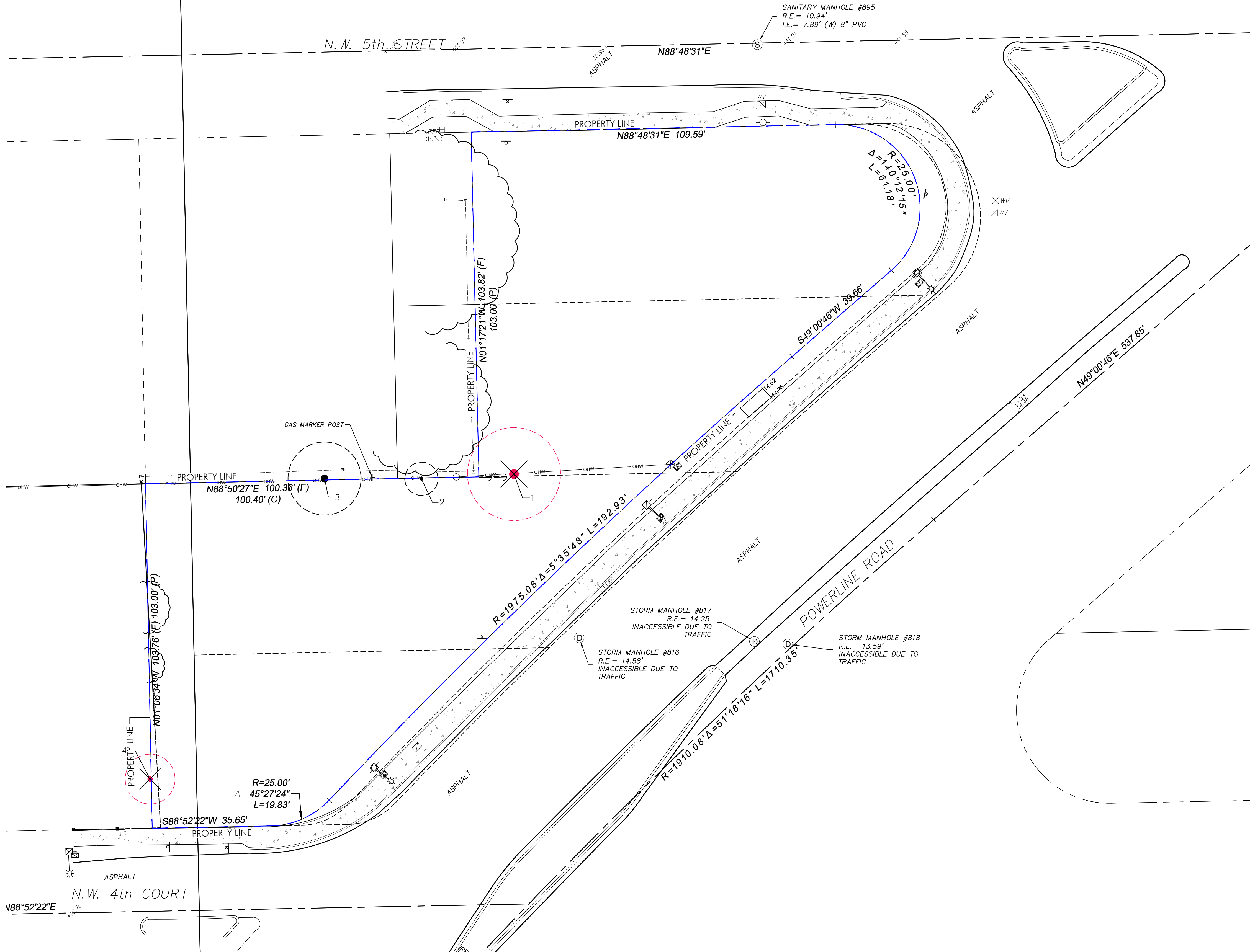


GARDNER + SEMLER  
LANDSCAPE ARCHITECTURE  
WWW.GSLADDESIGN.COM

17670 NW 78th AVE., SUITE 214  
MIA MI, FL 33015  
P 305.392.1016 F 305.392.1019  
CORP. ID# 0000266

This drawing is the property of GSLA Design and is not to be reproduced or copied in whole or part without written permission. It is not to be used on any other project and is to be returned on request. Contractor is responsible for verifying all site conditions prior to proceeding with work.  
COPYRIGHT © 2020



NOTE: BARRIER TO FORM CONTINUOUS FROM AROUND THE TREE OR GROUP OF TREES. SEE LANDSCAPE PLAN FOR LOCATION OF TREES TO REMAIN.

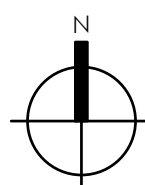
#### TREE PROTECTION DETAIL

REVISIONS		LANDSCAPE STANDARDS	
BY	DATE	URBAN FORESTRY CITY OF POMPANO BEACH	TREE PROTECTION DETAIL
TCW	04/2010		
AS	09/2021		
SCALE: N.T.S.		APPROVED BY: URBAN FORESTER	DATE: SEP 2021 DWG. NO. 104-1

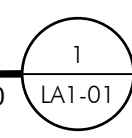
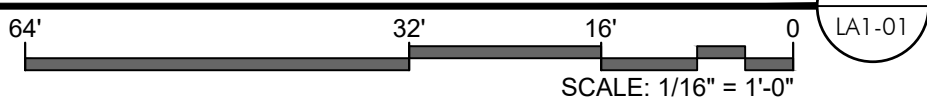
EXISTING TREE DISPOSITION LIST											
KEY	COMMON NAME	SCIENTIFIC NAME	DBH. (in.)	SIZE HT. (ft.)	SPD. (ft.)	HEALTH (%)	SPECIMEN #	TREE DISPOSITION	REMOVAL (MITIGATION)	APPRAISAL VALUE	COMMENTS
1	Earleaf Acacia	*Acacia auriculiformis	28			0%		Remove	n/a - Invasive	n/a	
2	Sabal Palm	Cabbage Palm	17			90%		Remain		\$495.00	
3	Strangler Fig	Ficus aurea	44			75%	Yes	Remain		\$2,839.00	
4	Carrotwood	*Cupaniopsis anacardioides	4			0%		Remove	n/a - Invasive	\$0.00	
*Appraised based on the FLORIDA CHAPTER ISA DETERMINING THE MITIGATION VALUE OF ROADSIDE VEGETATION (FLORIDA RULE 14-10.657)											

\*Adapted based on the FLORIDA CHAPTER ISA DETERMINING THE MITIGATION VALUE OF ROADSIDE VEGETATION (FLORIDA RULE 14-10.057)

TREE DISPOSITION SUMMARY		MITIGATION VALUE	SHORTFALL
TOTAL TREES TO REMAIN	0	-	-
TOTAL SPECIMEN TREES TO REMAIN	1	-	-
TOTAL PALMS TO REMAIN	1	-	-
TOTAL TREES TO RELOCATE	0	-	-
TOTAL PALMS TO RELOCATE	0	-	-
TOTAL TREES TO REMOVE	1	n/a - Invasive	-
TOTAL SPECIMEN TREES TO REMOVE	1	n/a - Invasive	-
TOTAL PALMS TO REMOVE	0	-	-

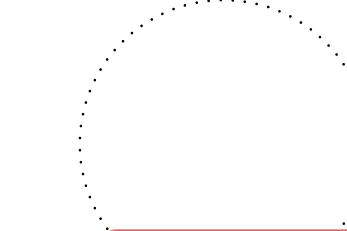


#### EXISTING TREE DISPOSITION PLAN



BIG TREE BBQ  
N POWERLINE RD  
POMPANO BEACH, FL

EXISTING TREE  
DISPOSITION  
PLAN



Ken Gardner  
Karl Semler  
DATE

SCALE

SHEET

PZ25-12000012  
02/03/2026  
LAT-01